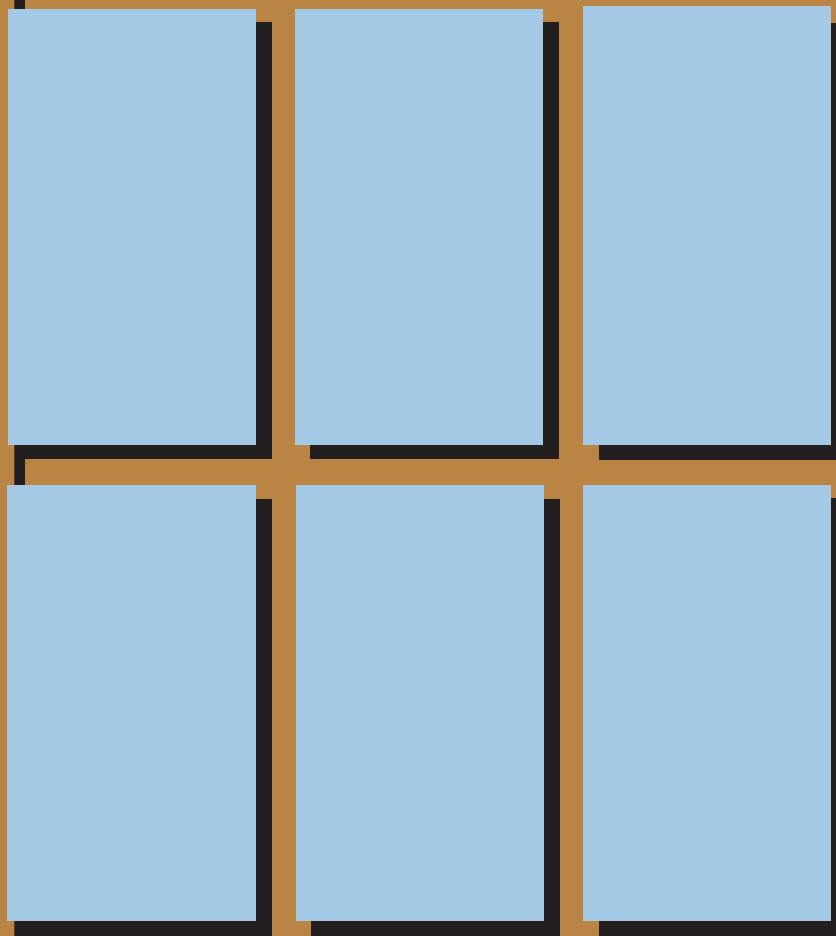


Planning for the Future...

Ann Arbor District Library



Annual Report 2003/2004



Ann Arbor District Library





Ann Arbor District Library

Vision

The Ann Arbor District Library provides collections, programs, and leadership to promote the development of literate and informed citizens through open and equal access to cultural, intellectual, recreational, and information resources.

Mission

The existence of the Ann Arbor District Library assures public ownership of print collections, digital resources, and gathering spaces for the citizens of the library district. We are committed to sustaining the value of public library services for the greater Ann Arbor community through the use of traditional and innovative technologies.

Values

- *Excellence in customer service*
- *Providing, supporting, and advocating access for all*
- *Acting with initiative, creativity, and flexibility*
- *Working together, with enthusiasm and optimism, to reach goals*
- *Responsible stewardship of resources*

JULY 1, 2003 - JUNE 30, 2004

Ann Arbor District Library

Board of Trustees



front row l to r:

David Cabill, Vice President

Barbara Murphy, Treasurer

Connie Powers

back row l to r:

William H. Kincaid, Secretary

Connie Greene

J.D. Lindeberg, President

Edward Surovell



Malletts Creek Branch

Architects: Luckenbach | Ziegelman Architects, PLLC

Construction Manager: Skanska USA Building, Inc.

Landscape Architects: InSite Design Studio, Inc.

Opening Day

January 10, 2004

Over 1,800 individuals walked through the doorways during opening weekend. Circulation of Library materials on opening day was an impressive 3,497 items. Tours were conducted by Library Director Josie Parker and visitors marveled at the Branch innovations and the sustainable design of the facility.

Sustainable Elements

Malletts Creek Branch is designed to integrate many sustainable systems in order to maximize the amount of energy that can be harnessed from the environment. Both the building itself and the surrounding landscape capitalize on environmental principles, which allow the building to operate in harmony with the ecosystem and the community that it serves.

The Branch features solar heating, natural day lighting, a vegetated green roof, convection cooling, naturally captured and filtered storm water, native plants and grasses, and many uses of materials that are renewable resources.

Features

Spatially, the 14,000 sq. ft. facility contains a program room for groups of up to 80 people; a vending area with seating for 20; a reading room (named after Nellie S. Loving, Ann Arbor's first librarian) with a fireplace for comfortable, leisurely reading; a children's space with a fish tank; several quiet study and tutor rooms; and exhibit space for local artists.





*As a result of the success of the Malletts Creek Branch, representatives of the Library were invited to speak at the PLA National Conference in Seattle for a program entitled *Going Green: Building a Sustainable Library.**

Resources and Services

The Malletts Creek Branch contains a collection of approximately 35,500 items, including books, DVDs, CDs and magazines. Electronic resources include 28 computer terminals, 18 of which are located in a Computer Training Center. Several self-checkout stations add to ease of customer use. The facility also offers 24-hour material pick-up capabilities, for quick and easy access to reserved library material.

Impact on the Community

Community use of the Malletts Creek Branch is exceeding all expectations. For the six months that Malletts Creek has been open, circulation has risen dramatically. The Branch circulated 84% more material than Loving Branch during the same period in 2003.

Malletts Creek Branch answers 30% more reference queries than any other branch in the Library system. Patron visits to the Library, new library cards distributed and program attendance at the facility are also exceeding expectations.

To accommodate the increased traffic, the parking lot has been expanded. Additional materials have been added to the Malletts Creek collection and staffing at the Branch has also increased.

The Future

The Library is now planning a new facility on Oak Valley Drive in Pittsfield Township, and will use lessons learned from the Malletts Creek Branch in planning this project. The new facility is scheduled to open in 2006. Sustainability and user convenience will also be hallmarks of the new site.



Strategic Planning

Ann Arbor District Library
2004-2010

A major project of 2003-2004 was the development of a new Strategic Plan to guide the Library into the next decade. With the assistance of Sandra Greenstone of Enliven Consulting, the Library gathered data by several methods: online survey, community focus groups, staff/trustee study sessions, and analysis of social and library industry trends. Information was then synthesized and analyzed to create the 2004 -2010 Strategic Plan.

Built into the initiatives, goals and actions of the Strategic Plan is the understanding that the Library must maintain current core services essential for quality public library service. Among these core services are the circulation of print, audiovisual and digital resources, access to gathering spaces and public computing, programming for entertainment and education, and story times.

The Initiatives

- I. Services* • Develop services, programs and collections that balance community demand and Ann Arbor District Library resources
- II. Finances* • Develop a multi-year financial process that assures adequate, sustainable funding for the next twenty years
- III. Facilities* • Develop and maintain clean, safe, physical facilities that creatively meet the needs of the community and staff with an emphasis on sustainability, accessibility and flexibility
- IV. Organizational Development* • Develop sustainable, adaptive, and organizational practices that allow the Library to thrive internally and externally
- V. Technology* • Integrate technologies that improve and enhance the delivery of all aspects of library services
- VI. Communications* • Develop high-level internal and external communications that get the message out, to all, about what we do and how we do it

The new plan, which includes new mission and vision statements for the Library, may be accessed through the Library website: www.aadl.org.



A community is very fortunate when it has a dynamic and vibrant library. In the past four years, I have had the enviable privilege of leading the Ann Arbor District Library in its efforts to improve our community in so many ways. The Library has enriched and strengthened the way I look at community, democracy, and information. My hope is that my work benefited the Library, and thereby the rest of the community, in similar ways.

Although the opening of the first of three new branch libraries was “the” moment of the past year, the most important accomplishment of the year was the creation and ratification of a new strategic plan. Unlike many similar documents, this plan is action-filled, with unusual grounding in the needs of the community it will serve. Indeed, the internal AADL staff planning team devoted an extensive portion of their effort to seeking feedback from the community about how best AADL could serve its customers’ needs.

The results of the patron survey performed to provide additional context to the strategic plan were striking. Although respondents were gratifyingly congratulatory, a deeper reading suggested the directions in which future excellence would take our institution. Convenience, accessibility, and expanded programming all rose to the top of the priority list. Hearing patrons’ concern about their time constraints, the staff of AADL can strive to take less of this precious resource while still fulfilling patrons’ needs. Similarly, we need to continually rethink how we can serve the diverse needs of all of our patrons.

A successful strategic plan is a dream. Without big dreams, there would be no big achievements. I hope that all of you will join me in making the dream of a strong, challenging, and sustainable AADL become a reality. We will all benefit in ways that cannot yet be measured or anticipated.

Thank you so much,



J.D. Lindeberg, President



2003
2004

Year at a Glance



July 2003 • The Library celebrates its Summer Reading Program **Laugh Out Loud**, with special Library appearances by Emmy-nominated *Late Night With Conan O'Brien* writer **Jon Glaser** and the cast of Detroit's famous improvisation comedy troupe, **The Second City**.

The first annual **Teen Graffiti Contest** is a hit as area teens create a multitude of artistic pieces during the Art Fairs, which are mounted for a special August exhibit in the Downtown Library.

The July/August issue of *Public Libraries*, a national library publication, includes a feature article by AADL librarians **Amy Cantu** and **Beth Andersen** entitled *It's Not Easy Being Green, But It Sure Is Fun*. The article documents the Library's 2002 month-long event series on sustainability.

August 2003 • The Library receives word that it has been awarded a \$236,006 grant from the **United States Environmental Protection Agency (USEPA)** for the project **Innovative Storm Water System**, which is a natural-systems approach to storm water management that will be utilized at the Library's new Malletts Creek Branch.

The new, improved **World of Reading** website www.worldofreading.org is launched. Owned by the Library and named a Best Bet education website by *USA Today*, the site allows youth throughout the world to instantly post or read book reviews online. The site houses over 10,000 reviews written by children of over 1,200 books.

September 2003 • **aadlAnytime** online reference service allows Library website visitors the ability to virtually communicate with a librarian 24 hours a day, seven days a week. An online company hired by the Library responds to questions after Library hours.

The *AADL News*, a seasonally-produced newsletter, replaces the *Homepage Hardcopy*. The new publication concentrates on Library and Board news, while new monthly event flyers announce all upcoming programs.



Year at a Glance

Rock 'n' Roll & Revolution: Revisiting the '60s, a five part film/discussion series, becomes one of the program highlights of the year. Related events include an exhibit of 1960s memorabilia, a panel discussion of Ann Arbor in the 1960s, a rock 'n' roll dance party and, of course, a showing of the film *Easy Rider*.

Nationally-known censorship expert **Pat Scales** discusses first amendment and censorship issues for **Banned Books Week**.

Library staff participate in two inaugural Festivals, the **Kerrytown Book Festival** and the first annual **Latino Festival** in Ypsilanti's Riverside Park.

October 2003 • The **Cover to Cover** book discussion series begins a system of providing books for discussions in community senior centers, following the Library Cover-to-Cover discussions. The Jewish Community Center, Ann Arbor Senior Center, Parkway Meadows and Pittsfield Senior Center enjoy this service.

Michigan Chillers author **Johnathan Rand** chats with a filled-to-capacity room of area youth about his eerie series and his career as a writer.

Library, university and community representatives choose Beverly Daniel Tatum's book *Why Are All The Black Kids Sitting Together In The Cafeteria? And Other Conversations About Race* to be the focus of **Ann Arbor/Ypsilanti Reads 2004**.

November 2003 • A program featuring nationally-known economist **Paul Krugman** becomes one of the highest attended programs in the history of the Library, as audience members gather over an hour before the program to hear the political columnist.

The **Making of Ann Arbor** website moaa.aadl.org, the digital history of this community, is redesigned to include additional content and easier browsing and navigation features. This public website was created in collaboration with the Ann Arbor District Library, the Bentley Historical Library and the University of Michigan's Digital Library Production Services.





Year at a Glance

Children's Book Week is celebrated with a month-long exhibit, **Children's Books: From Beginning To End**, featuring rare items from the Special Collections Library, University of Michigan. A gala reception is followed by many related programs featuring Caldecott-winning illustrator **David Small**, award-winning writer **Sarah Stewart**, Alaskan adventure author **Pam Flowers**, bookmaker **Jean Buescher** and others.

The Library wins three first place design awards from the **Michigan Library Association Marketing and Public Relations Roundtable**. AADL is awarded kudos for its *2001-2002 Annual Report*, *AADL News* and the 2003 Summer Reading Programs publicity.

December 2003 • Library hours expand across the system, allowing more convenient access to all Library locations.

In preparation for the new branch opening, the **Nellie S. Loving Branch** closes its doors.

January 2004 • With much fanfare, **Malletts Creek Branch** opens its doors. Over 1,800 individuals attend opening weekend, which includes performances by comedian **O.J. Anderson** and Gemini musical group member **Lazlo Slomovitz**. Looking to the future, the Library Board approves the schematic design for a **new branch Library** to be located on Oak Valley Drive in Pittsfield Township.

The first issue of *Axis*, a new Library newsletter for teens, is published. Events and items of interest for middle and high school students are listed in this publication, which is available at all Library locations.

The Library's strategic planning website **planning.aadl.org** goes live and documents the progress to date for the 2004 - 2010 Strategic Plan. A survey, which will be used in the planning process, is included in the website.

Over 600 individuals attend the kick-off for the **2004 Ann Arbor/Ypsilanti Reads** at Washtenaw Community College. Author, psychologist and Spelman College President



Year at a Glance

Beverly Daniel Tatum is the guest speaker. During the first month of the Read, AADL circulates over 750 copies of Tatum's book, organizes training sessions for community book discussion leaders and begins its three-month series of related programs, which also celebrate the anniversary of Brown v. the Board of Education.

For the third consecutive year, **Mervyn's**, a division of Target Corp., awards a grant to the **AADL Library Songsters**, an innovative program which encourages students to link music to a particular era or country which they are studying in school. This year, the program is awarded \$3,750.

February 2004 • The Pittsfield Planning Commission approves the **Final Site Plan** for the new branch to be built on Oak Valley Drive.

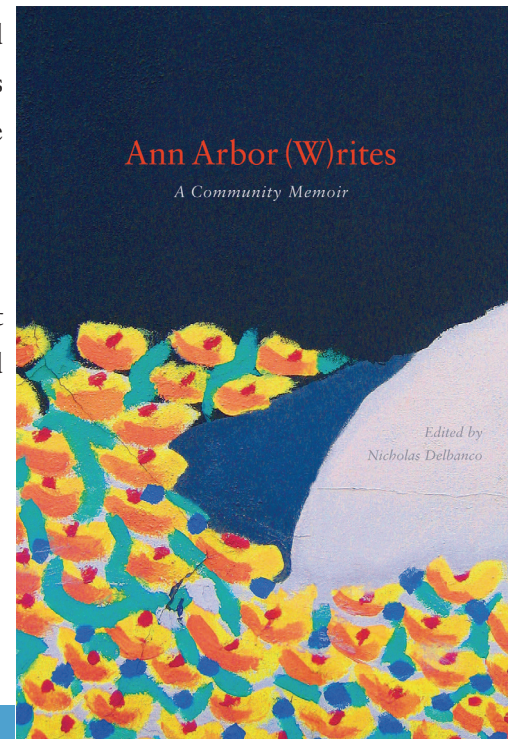
March 2004 • The Library closes for a day to hold a **community planning session** for the Strategic Plan. Community members, staff and Trustees discuss the findings of the strategic planning teams and begin to write a draft of the Plan.

Company members of the famed **Guthrie Theater** of Minneapolis discuss both the world behind the scenes of the historic theater and their upcoming production of *Othello*. This event, cosponsored by **University Musical Society**, is followed by a gala reception for the cast.

April 2004 • Library Trustees unanimously approve the **2004 - 2010 Strategic Plan**.

The first annual **Ann Arbor Book Festival** is held. In addition to hosting its own booth at the festival, the Library sponsors several activities, including a teen short story contest and a spelling bee for both adults and youth.

Ann Arbor (W)rites: A Community Memoir is published by the Library. This collection of essays, short stories, poems, photographs and line drawings contributed by such past and present Ann Arborites as *Washington Post* correspondent **Robin Wright**





Year at a Glance

and *Charlie's Angels* actress/artist **Lucy Liu** is a product of the Library's collaboration with the Book Festival. A panel discussion featuring several of the contributors is held at the Library.

National Library Week events feature *Newsweek* contributing editor **Ellis Cose**, award-winning teen author **Chris Crutcher** and a panel discussion of the pros and cons of press coverage of world events, featuring several international journalists from the **UM Knight-Wallace Fellows** program.

Art from renowned artist **Gerome Kamrowski** is presented to the Library by the **Ladies' Library Association**, for display at Malletts Creek Branch.

Librarian **Laura Pershin Raynor** is invited to perform as a showcase teller at October's National Storytelling Festival in Tennessee.

May 2004 • The **Eckstein** family donates a meticulously restored dollhouse to be displayed in the youth section of the Malletts Creek Branch.

Holocaust survivor **Dr. Emanuel Tanay** shares his experiences of the Warsaw ghetto uprising and Raoul Wallenberg.

June 2004 • **Circulation of Library material surpasses 2 million** for the first time in Library history. Circulation statistics soared at the Downtown Library and at every branch throughout the system.

Guy Louis and his **Chautauqua Express** kicks off the **2004 Summer Reading Program: Discover New Trails** with a filled-to-capacity performance at The Ark.

AADL graphic designer **Rachel Levenberg** receives multiple awards for her printed material design at the **American Library Association** annual conference in Orlando. Levenberg won the most coveted award, the **National Library Public Relations Council's L.PeRCY Award**, for her design of the Malletts Creek Branch Opening Day materials.



*T*raditionally, libraries of all types have preserved the past with local history, genealogy and archival collections of unique and irreplaceable items. While the Ann Arbor District Library has and will continue to protect and preserve its history and the history of the Ann Arbor community, moving forward demands that we also preserve the future. This annual report chronicles the work over the past year to strengthen our connection in the community with collaborations and partnerships. It also highlights our focus on building projects, programs and collections.

Nine years ago, a wise and forward thinking electorate voted overwhelmingly to fund a public library in perpetuity. Currently, the branch expansion program and strategic plan provide the blueprint that the Board of Trustees has given staff to follow as we go about our daily work to fulfill that mandate. Practicing responsible stewardship in the present will provide future citizens a well-funded library system with functional and beautiful buildings, access to an outstanding collection, and a knowledgeable and professional staff. The Board and staff of the Ann Arbor District Library will embrace our rich tradition, and forge ahead to develop practices to preserve a future that assures public ownership of print collections, digital resources, and gathering spaces. We are committed to sustaining the value of public library services through the use of traditional and innovative technologies.

Without you, our public, there would be no public library. Your constancy with financial support and your increasing use of the collections and buildings is the best measure we have of the job we are doing.

It is a pleasure to serve as your public library director.



Josie Barnes Parker, Director



2003
2004

Statistics



DISTRICT POPULATION SERVED	155,611
REGISTERED CARDHOLDERS (11.6% increase)	117,537
NEW LIBRARY CARDS ISSUED	11,974
PATRON COUNT (3.4% increase)	1,193,025
HOURS OPEN TO PUBLIC.....	3,712
DAYS OPEN TO PUBLIC.....	352
INTERNET & WEBCAT STATIONS FOR THE PUBLIC.....	121
COMPUTER WORKSTATION USAGE (NUMBER OF USERS)	
Downtown	83,900
Loving/Malletts Creek	23,712
Northeast.....	22,944
West.....	32,289
Total.....	162,845
VISITS TO WEBSITE.....	4,445,339
Average hits per day.....	13,610
SYSTEMWIDE CIRCULATION (28% increase)	2,431,745
Downtown Library (32.9% increase)	1,454,894
Loving/Malletts Creek Branch (40.1% increase).....	335,190
Northeast Branch (13.8% increase).....	327,069
West Branch (15% increase).....	304,370
Outreach (17.1% decrease).....	10,222
CIRCULATION PER CAPITA.....	15.6
TOTAL REFERENCE QUESTIONS (6.9% increase).....	126,225
TOTAL PROGRAM ATTENDANCE (42.8% increase).....	45,096
NUMBER OF PROGRAMS OFFERED (43.8% increase).....	1,329
SUMMER READING PROGRAMS	
Children enrolled (11% increase).....	3,962
Teens enrolled (26.8% increase).....	203
Adults enrolled (11.1% increase)	1,426
PUBLIC COMPUTER CLASSES ATTENDANCE (25.6% increase).....	1,808

SYSTEMWIDE CIRCULATION

by Most Popular Materials % increase

Books	712,703	26.4%
Youth Books	442,871	13.6%
Compact Discs	247,776	32.4%
Videos	194,897	-1.4%
DVDs	193,971	261.6%
Youth Videos	127,704	23.0%
Youth Paperbacks	108,756	22.6%
Paperbacks	88,744	7.0%
Magazines	64,435	28.8%
Audio Books	57,130	3.1%

ADULT MATERIAL SYSTEMWIDE

Books	274,122
Books	229,151
Compact Discs	19,849
Videos	8,893
DVDs	6,139
Audio Books on Cassette	5,423
Audio Books on CD	1,549
Cassette Tapes	1,289
Foreign Language Materials	1,087
Art Prints	462
CD-ROMS	235
Archived Materials	45

YOUTH MATERIAL SYSTEMWIDE

Books	107,016
Books	96,180
Videos	3,667
Audio Books on Cassette	1,875
Compact Discs	1,729
DVDs	1,431
Kits	930
CD-ROMS	465
Audio Books on CD	455
Cassettes	284

Statistics



FINANCIAL

87.2

4.5

2.4

2.2

1.7

1.0

1.0

%: REVENUES

Property Taxes	\$11,972,718.....	87.2%
Other	611,735.....	4.5
Grants and Memorials	333,807.....	2.4
Penal Fines	304,429.....	2.2
Library Fines and Fees	239,594.....	1.7
Interest.....	133,728.....	1.0
State Aid	135,560.....	1.0

Total Revenues \$13,731,571..... **100.0%**

Employment Costs	\$6,582,115	51.6%
Capital Outlays	2,878,561	22.6
Materials.....	1,073,919	8.4
Operating Supplies	747,679	5.8
Purchased Services.....	643,473	5.0
Rentals	250,440	2.0
Repairs and Maintenance	216,234	1.7
Programming.....	191,632	1.5
Other	177,787	1.4

Total Expenditures \$12,761,840

%: EXPENDITURES

51.6

22.6

8.4

5.8

5.0

2.0

1.7

1.5

1.4

SCALE: 100%

F r i e n d s

The Friends had another good year in which we maximized our giving to the Library and minimized our expenses as much as we could. Our thrift paid off by allowing us to continue our \$90,000 a year grant to the Library and, over two years, adding an additional \$10,000 gift for the Malletts Creek Branch.

The Friends Book Shop, which is our main source of fundraising, and is open from September to early May, had significant sales increases last year. Bookcarts that we stock at each branch also continued to increase their sales. Memberships to the Friends, which allow members early Book Shop entry at our Fall Opening and at our special sales, continue to rise.

Friends funds donated to the Library are used for a variety of Library programs and projects. This past year Friends money helped support the Guthrie Theater event, the Summer Reading Programs, special equipment for the Library (such as furniture for the computer room), as well as cassettes, books and other reading materials.

The Friends are particularly grateful for all our volunteers. Our success rests on their devotion and hard work. I would like to especially mention Fay Mueblig, a volunteer of untold years, who died this year. She continued to work weekly in the Book Shop well into her nineties. Her family has generously given much of her personal library to the Friends.

It has been my pleasure to serve as president of the Friends over the last four years, working with talented and resourceful Board members; Diane Clark, our fantastic Book Shop Director; and the sensational Library staff.

Robert C. Gunn

Robert C. Gunn, President



D o n o r s

General AADL Collection

Carole Buttrum

(in memory of the Honorable Thomas Shea)

Adam Carr (in memory of Marion Carr)

Larry R. Crockett & Kathy C. Richards

Edwards Brothers, Inc.

Barbara & William Foster

Harriet Gales (in honor of Elizabeth Sklar)

Sarah & John Hemdal (in memory of Helen Visovatti)

John & Mathilde Kaufmann

Nora Maloy (in memory of Jay DeLay)

University of Michigan, Faculty Women's Club, Art Study
Section (in memory of Georgia Haugh)

Carol Schwartz & E. Dianne Baker (in memory of
Deb Baker & Michael Schwartz)

Richard Shafer (in memory of Robert B. Shafer)

Anneke Van Den Broek (in memory of Marion Carr)

Virginia Vanden Broek (in memory of Marion Carr)

Fine Art Collection

Ladies' Library Association

Branch Expansion

Ann Arbor Area Community Foundation,

Thomas Buhr Fund

Friends of the Ann Arbor District Library

Cozette T. Grabb (in memory of J. David Owens)

Ladies' Library Association

Mehul & Khyaati Mody

David & Holly Owens (in memory of J. David Owens)

E. Reese Owens (in memory of J. David Owens)

Oliver & Donna Owens (in memory of J. David Owens)

Thomas & Angela Owens (in memory of J. David Owens)

Kevin Smokler

Julianne Whiteside (in memory of J. David Owens)

General Gift Fund

Ann Arbor Area Community Foundation,

Robert Bruce Dunlap Memorial Fund

James & Ann Marie Borders

Friends of the Ann Arbor District Library

Ellie Cox

E.V. Douvan

Helen Garris

Gene Codes Corporation (in memory of Lucy Hadden)

Roshayne Jaimon

Katherine McClure Estate

Target Corporation

Laurie Griffith Zimmerly Memorial Fund

The Hoffman Family (in honor of Kathryn Perrine and in
memory of William Perrine)

Gari Stein

The following gave in memory of Janet Chown:

Roland & Catherine Akre

Sarah & William Archer

Daniel & Monica Atkins

Barbara Baker

Ronald & Virginia Beane

Frank & Gail Beaver

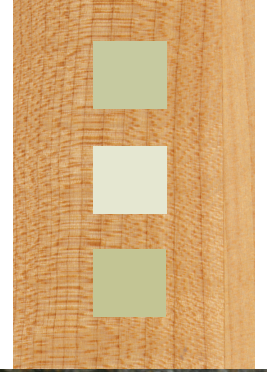
Booth Newspapers Inc., Computer
Division

Victor & Thelma Bordo
Jack & Jeannette Briegel
Karen Bright
Stephanie Buttrey
James Carroll
Claude & Joann Coates
David Chown
Eric Chown & Rachel Beane
Lynda Cole
Carol Eggers
Margaret Erickson
Jack Stubbs & Sandra Eisele
Cheryl Farmer
Fortuna Investment Group
The Garden Club (Joan, Dianne, Bev,
Andi, Gail, Jack, & Cliff)
Rosalie Gibowski
Jeffrey & Amy Gore
Grand Traverse Regional Land
Conservancy
Emily Hamilton
Jeanne Hannah
Jeanette Hescheles
Jennifer Hogler
Frank Houser
Ian Hubert & Kira Slovacek
Patricia & Gerald Jehle
Molly Kallis
Charles Kehr
Charlie & Mary Lou Kellerman
Wayne & Ruth Ann Kladder
Joan & Peter Krempel
John & Christine Krempel
Joan Knoertzer
Mary LeFevre
Audrey Lelievre
Roger Lelievre
Scott & Kristine Lovelace
Frances Lyman
Kenneth & Helen MacLeod
Joseph & Kathleen Magliochetti
Richard & Claire Malvin
Christie McGue
Shirley McNally
Jack, Marg & Garth Mortensen &
Sylva Gilmore
Lois Myers
Arthur & Joanne Nixon
Margaret Norris
Julie Odenweller
Arbutus Paulus
Steve & Rose Perry
John Peterson & Diane Mortensen
Joyce Phelps & Franklin Weaver
Barbara & Larry Quinn
Richard & Ellen Raab
Resource Recycling Systems
Diane Robins
James & Joan Roth
Neal & Sarah Rothleder
Margaret Rutila
Dick & Pat Sadler
Judith & Manfred Schmidt
Jean Schultz
Hazen & Shirley Schumacher
Richard Schweiss
Martin & Karen Seaman
Beverly Seifert & Jack Hickman
Marion & Jeanie Shroyer
June Smith
Michael Smith
Myrtle Smith
Nancy Smith
Allen & Mary Spivey
Charles Spring
George & Patricia Stewart
Suzanne Theberge
Charles Tomlin & Jenny MacDowell
Pamela Tremble
K. Jean Tripp
Mary Unterburger
Darragh Weisman
Kevin & Laurie Wicks
Angela Yang
*Marcy Westerman Ann
Arbor District Library
Fund for Youth Programs*
Judith Westerman & Edward Silver

Community Partners

African-American Cultural and
Historical Museum of Ann Arbor
Ann Arbor Area Community
Foundation, Robert Bruce Dunlap
Memorial Fund
Ann Arbor Book Festival
Ann Arbor Comedy Showcase
Ann Arbor Hands-On Museum
Ann Arbor News
Ann Arbor Police Department
Ann Arbor Public Schools
Ann Arbor Symphony
Ann Arbor Women Artists
Ann Arbor Young Actor's Guild
The Ark
Art Pro Tem
Barnes and Noble Booksellers
Baskin Robbins Ice Cream
Bentley Historical Library
Borders Books and Music
Brown Chapel A.M.E. Church
Busch's Valu Land
Community Television Network
Nicholas Delbanco
Detroit Public Library
Domino's Pizza
Eckstein Family
Espresso Royale Caffè
First United Methodist Church
Friends of the Ann Arbor District
Library
Friends of the University of Michigan
Libraries
Great Harvest Bread Company
H & R Block
Huron Valley Watershed Council
Islamic Educational and Resources
Network
Jefferson Market
Jewish Community Center
Ladies' Library Association
Malloy Incorporated
Mervyn's
Michigan Theater
Mr. B
National Association for Multi-
cultural Education, MI Chapter
Nicola's Books:
A Little Professor Store
Quality 16 Theater
Mark Sandell
Savitski Design
Shaman Drum Bookstore
United for Sight, Inc.
University of Michigan
UM Center for Middle Eastern and
North African Studies
UM Center for Russian & East
European Studies
UM Council for Disability Concerns
UM Department of Women's Studies
UM Digital Production Services
UM Exhibit Museum of Natural
History
UM Health System
UM Knight-Wallace Fellows
Journalists
UM Life Sciences, Values & Society
Program
UM Libraries
UM Museum of Art
UM Office of Lesbian, Gay, Bisexual
and Transgender Affairs
UM Special Collections Library
University Musical Society
Washtenaw Community College
Women's Center of America
Ypsilanti District Library
Zingerman's Creamery

Community partners assisted the Library with many events, activities and programs this year, including the Summer Reading Programs; Ann Arbor/Ypsilanti Reads 2004; the publication of Ann Arbor(W)rites; the Making of Ann Arbor website; Library Songsters; and many other lectures, exhibits and services.



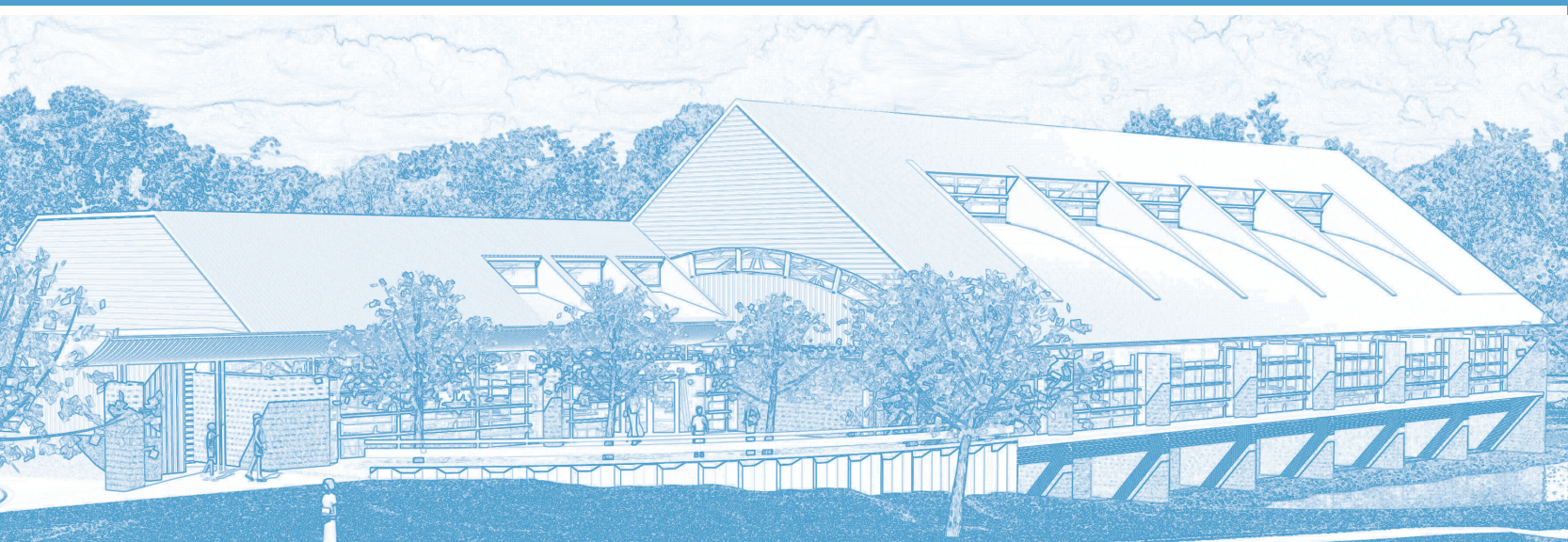
C o m m u n i t y



P a r t n e r s







DOWNTOWN LIBRARY

343 South Fifth Avenue
Ann Arbor, MI 48104

MALLETTS CREEK BRANCH

3090 East Eisenhower Parkway
Ann Arbor, MI 48108

NORTHEAST BRANCH

2713 Plymouth Road
Ann Arbor, MI 48105

WEST BRANCH

2503 Jackson Road
Ann Arbor, MI 48103

734.327.4200
www.aadl.org

Ann Arbor District Library

Funding for this Annual Report was provided
by the Friends of the Ann Arbor District Library